

Prestige R2 DTF Installation Guide



DTF PRINTER

DIGIRIP

Hosonsoft

INDEX

Contents

DigiRip Installation	2
Hosonsoft Installation	8
Printer Installation	9

DigiRip Installation

Step 1:

TICK BOX WHEN DONE WITH STEP

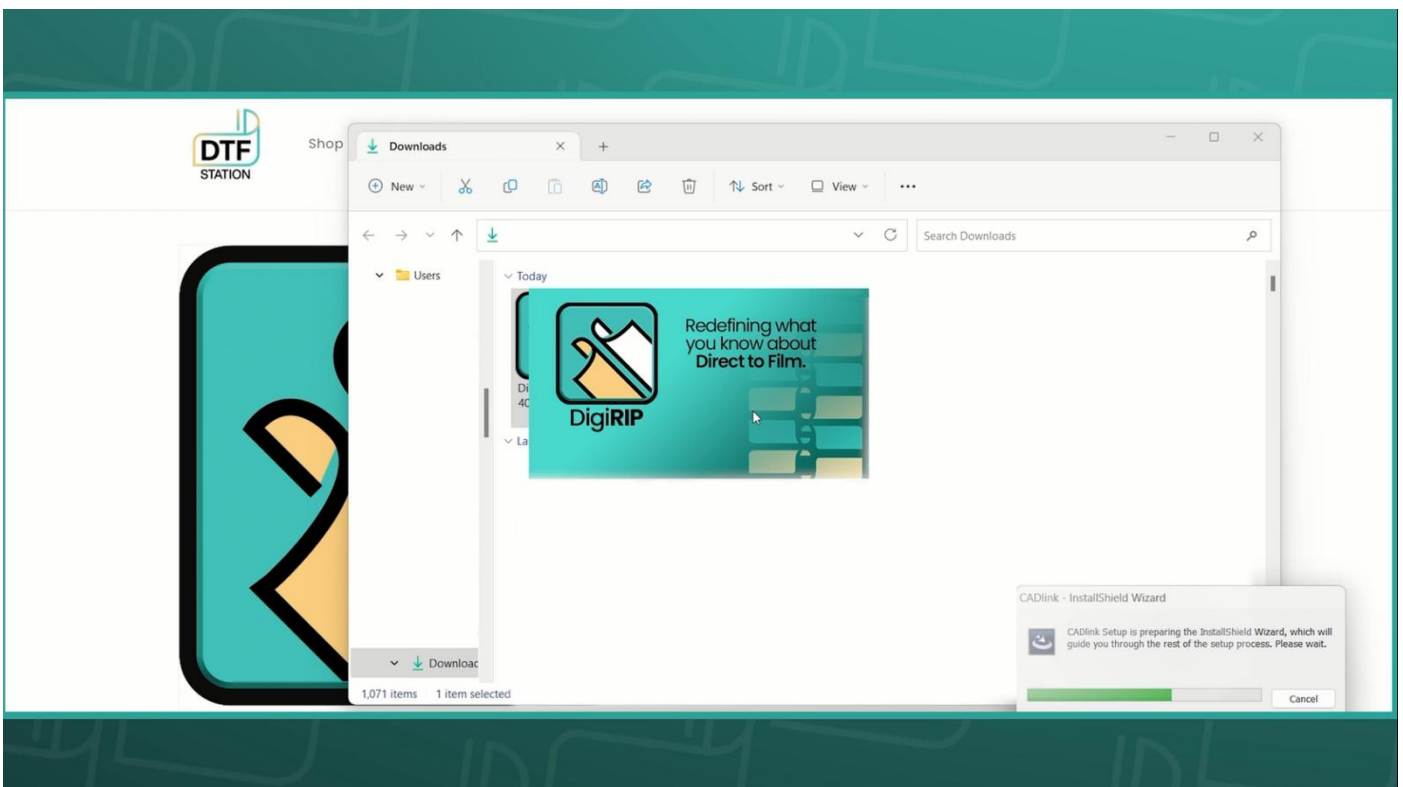
Download, Unzip, install the DigiRip Raster image processing (RIP) software.
Use the link below.

<https://bit.ly/3YD0COX>

Step 2:

TICK BOX WHEN DONE WITH STEP

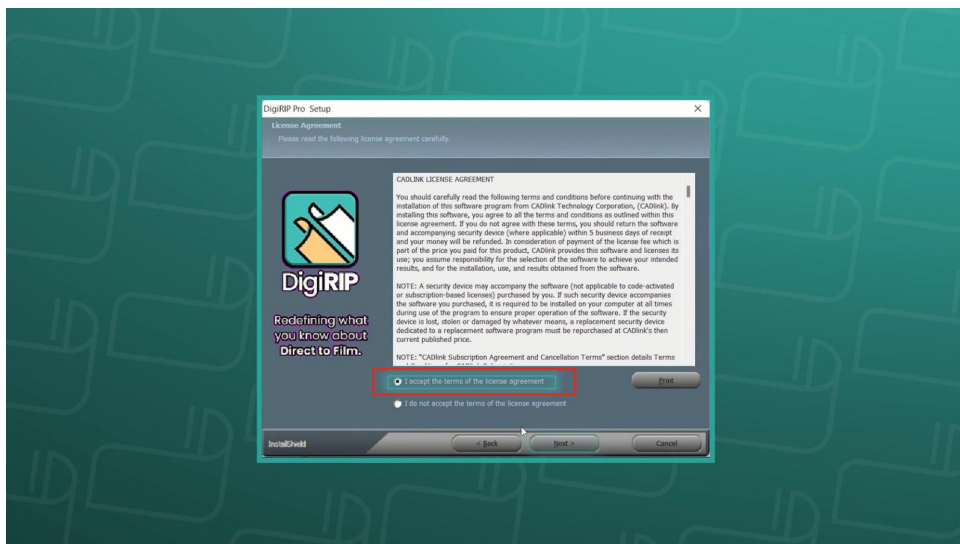
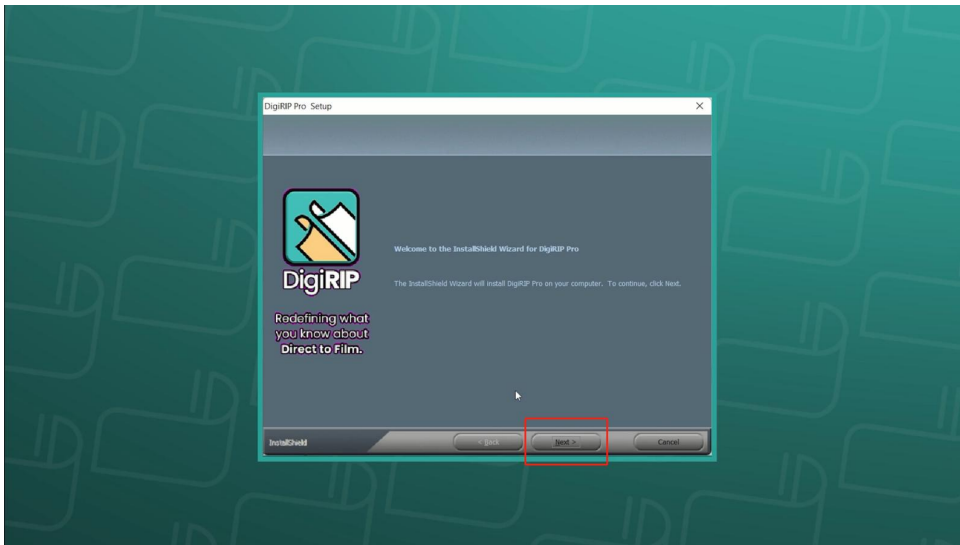
Once you unzip the DigiRip Software, Double click on the icon to



Step 3:

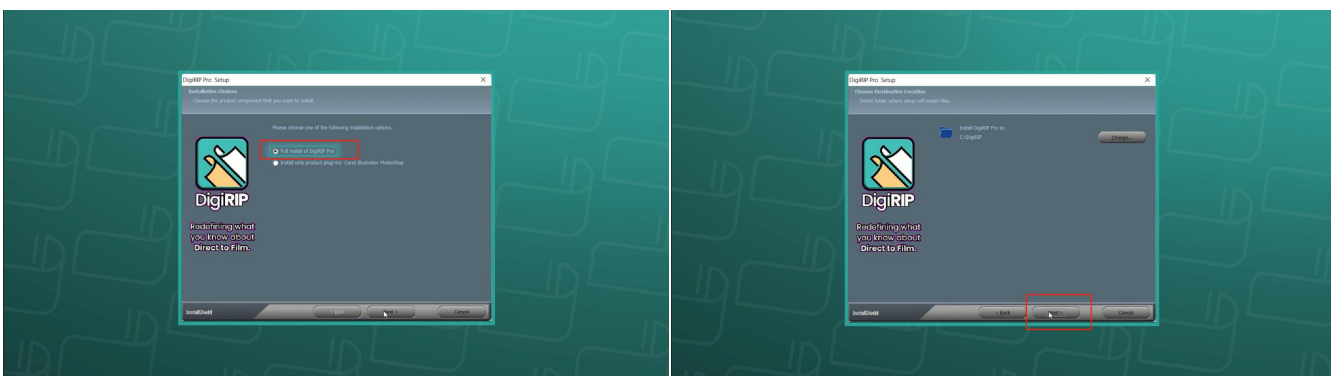
TICK BOX WHEN DONE WITH STEP

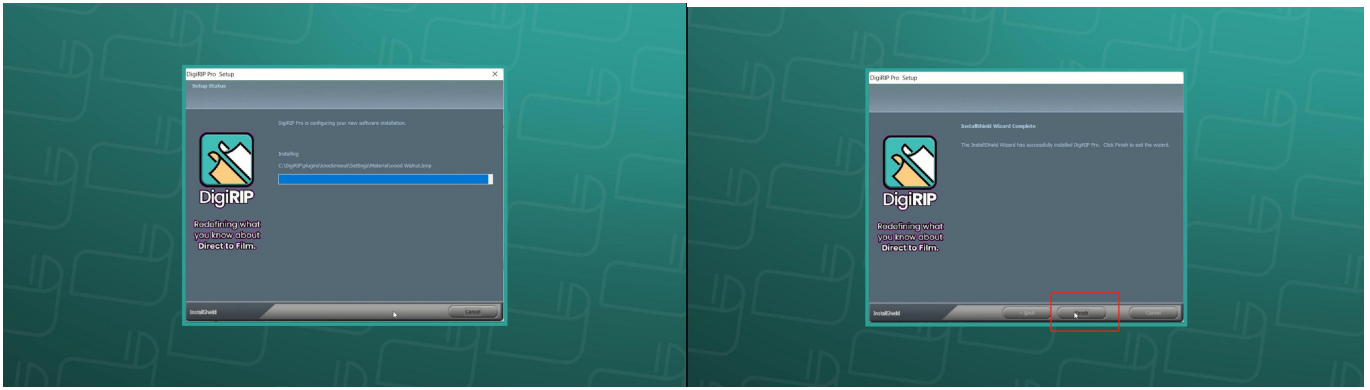
Click “Next” and accept the agreements and terms



Step 4: Select “Full install of DigiRip Pro and Click “Next”

TICK BOX WHEN DONE WITH STEP

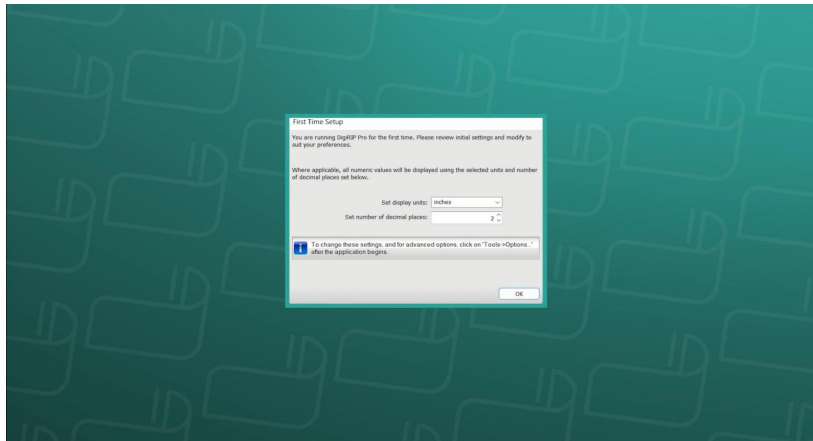




Step 5: First time setup

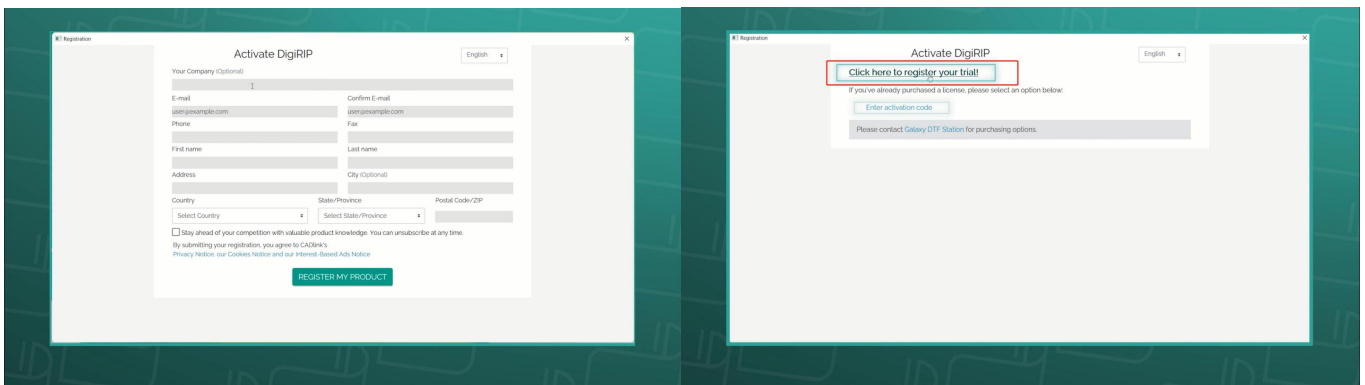
TICK BOX WHEN DONE WITH STEP

Select display units and number of decimal places and press “OK” to continue



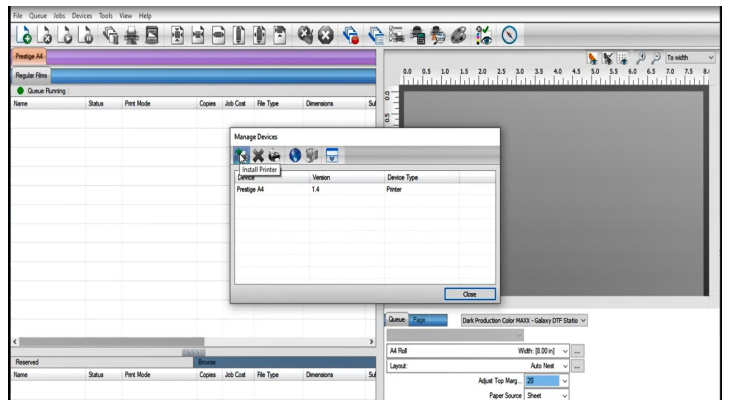
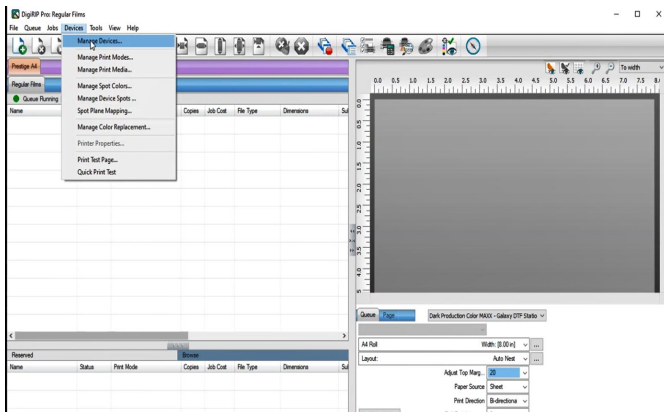
Step 6: Enter the activation code and finish the registration

TICK BOX WHEN DONE WITH STEP



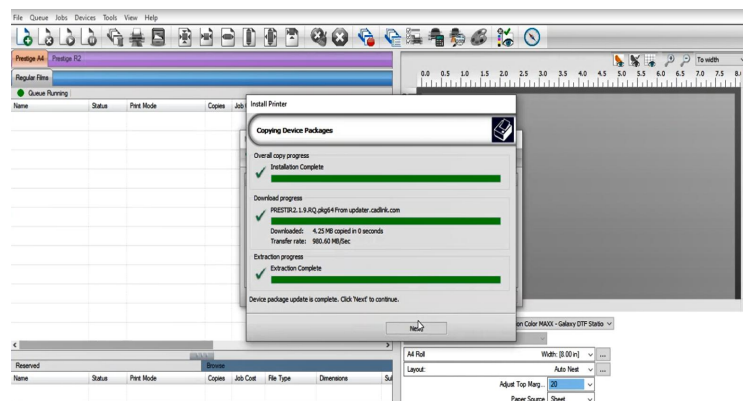
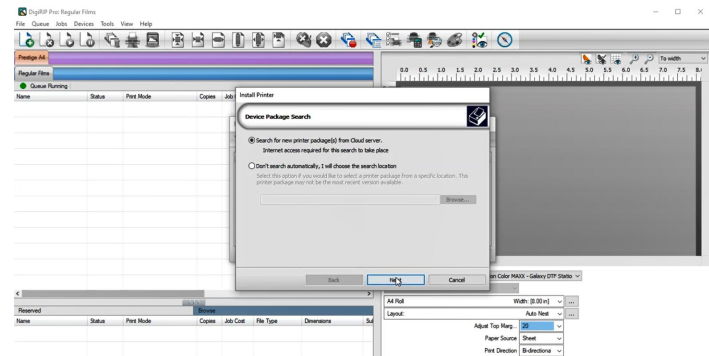
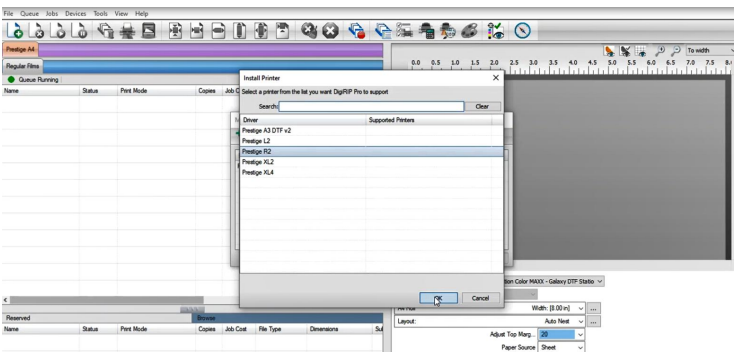
Step 7: Install Prestige R2 Driver

TICK BOX **WHEN DONE WITH STEP**



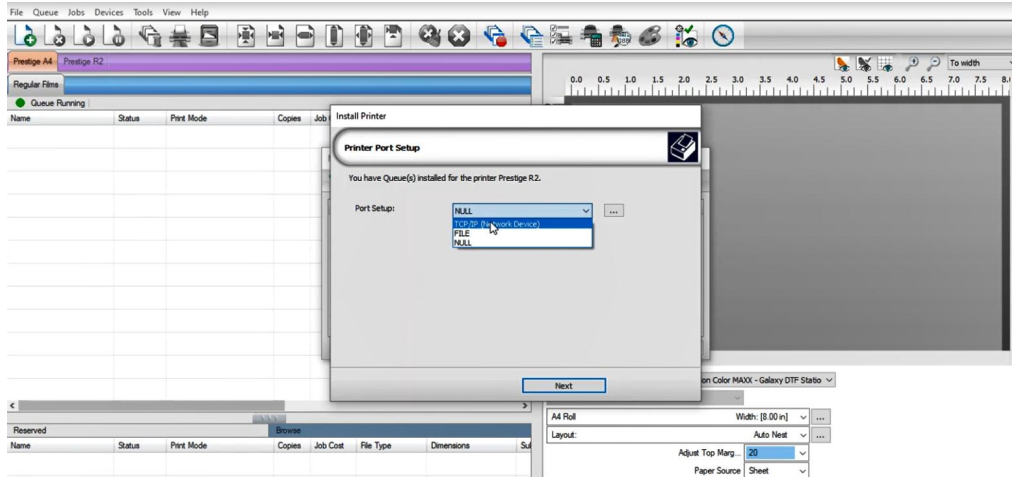
Select "Prestige R2"

Click Next to Download Prestige R2 Driver



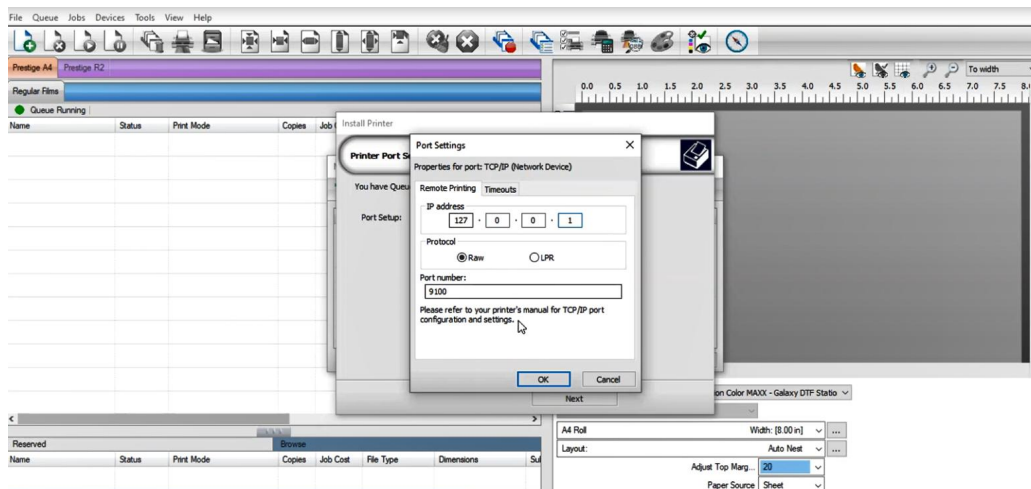
Select the "TCP/IP (Network Device)"

TICK BOX WHEN DONE WITH STEP



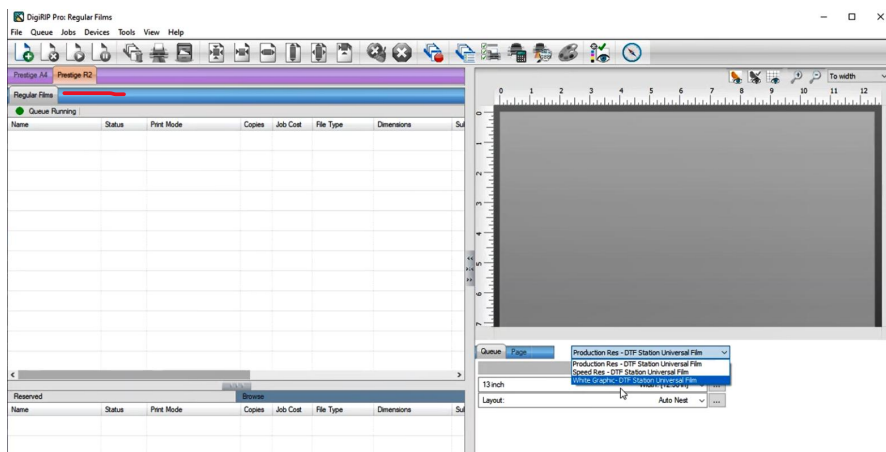
TICK BOX WHEN DONE WITH STEP

Set the IP address to 127.0.0.1



You have successfully installed the DigiRip if you can locate "Prestige R2" tab

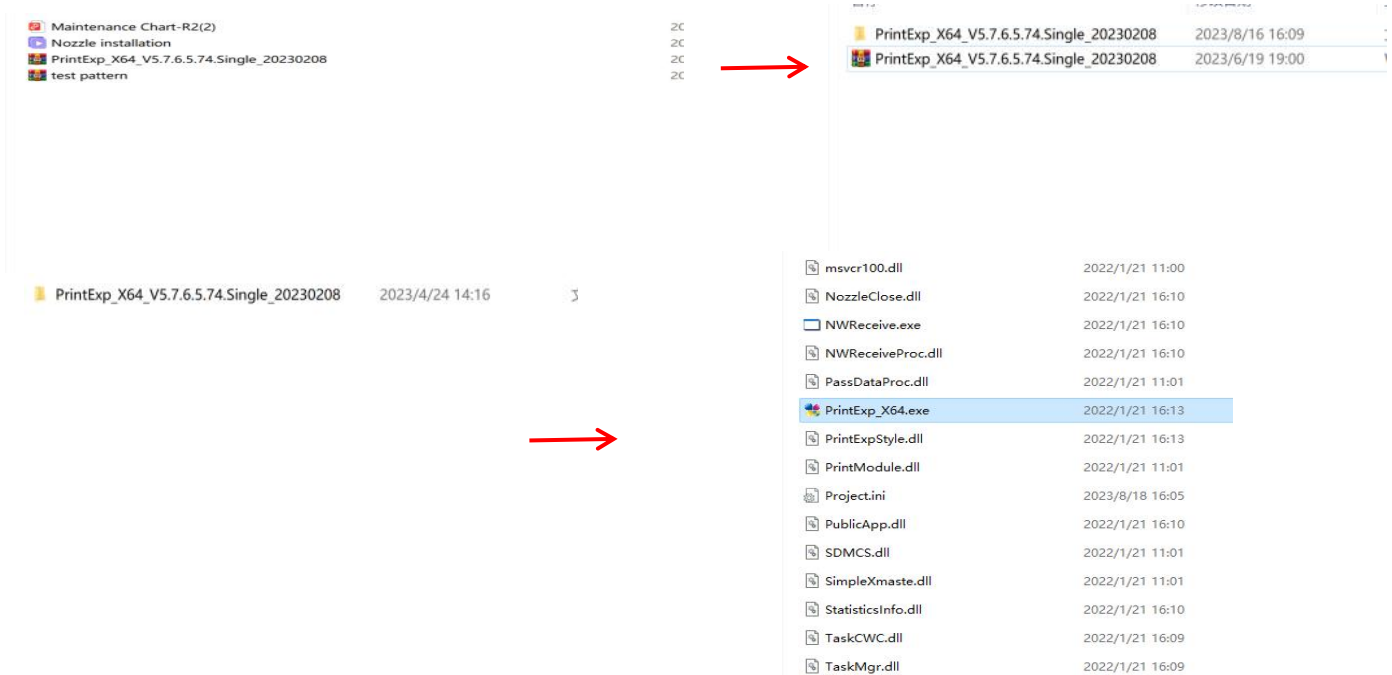
TICK BOX WHEN DONE WITH STEP



Hosonsoft Installation

TICK BOX WHEN DONE WITH STEP

Step 1 Copy the Print EXP X64 file from the USD flash drive to your PC or download the Print EXP file from below link: <https://bit.ly/3YD0COX>. Please extract/ unzip the PrintEXP. Once it's extracted, look for exe extension "PrintEXP_X64.exe" and double click to access PritEXP



TICK BOX WHEN DONE WITH STEP

Step 2 Please watch the Hosonsoft Installation Guide on Quick Start Guide to follow the step by step guide

Printer Installation

Step 1: Prepare accessories & consumables for installation as below:
Film bracket, film feeders, film & ink

TICK BOX WHEN DONE WITH STEP



Step 2: Install the Film brackets

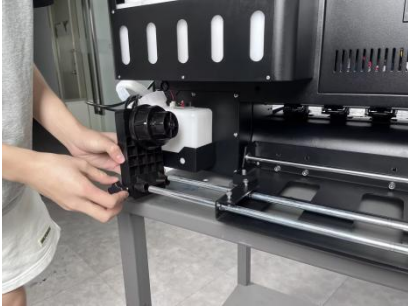
First align all the holes, and then tighten the hexagonal screws in proper order

TICK BOX WHEN DONE WITH STEP



Step 3: Install the Media Rollers

TICK BOX WHEN DONE WITH STEP



Step 4: Load the film

TICK BOX WHEN DONE WITH STEP

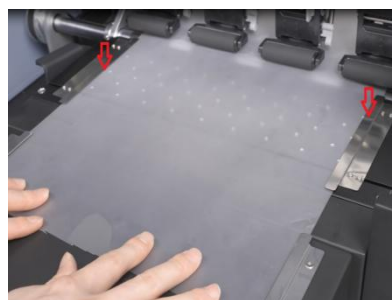
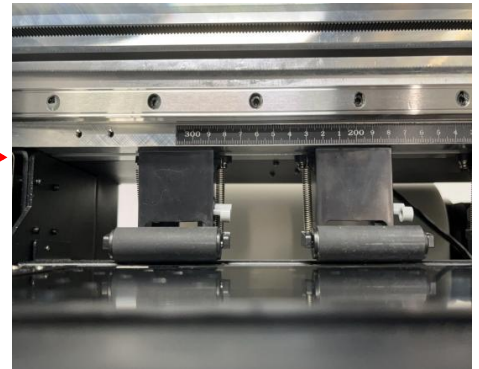
Align the Media Rollers on both sides, and fix the screws on both sides after installation



Step 5: Feed the DTF film through the Printer Bed

TICK BOX WHEN DONE WITH STEP

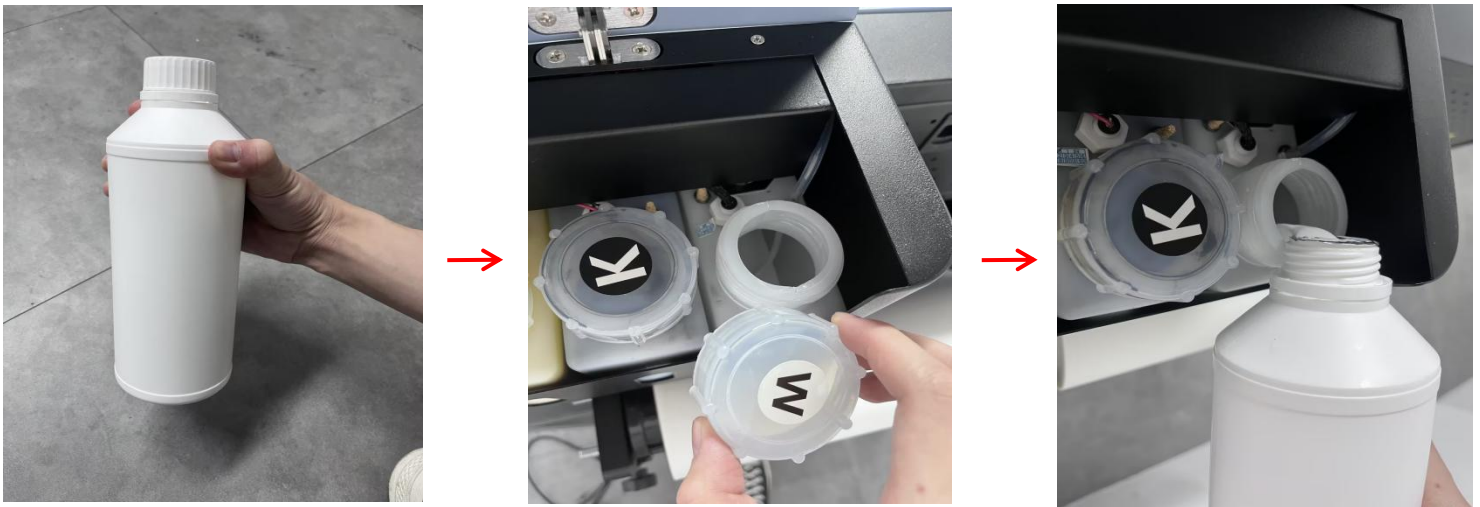
Lift the Pinch roller lever bar to raise the pinch rollers. After the films are fed forward, shift the pinch roller level bar downward to lock the film in.



TICK BOX WHEN DONE WITH STEP

Step 6: Fill the ink

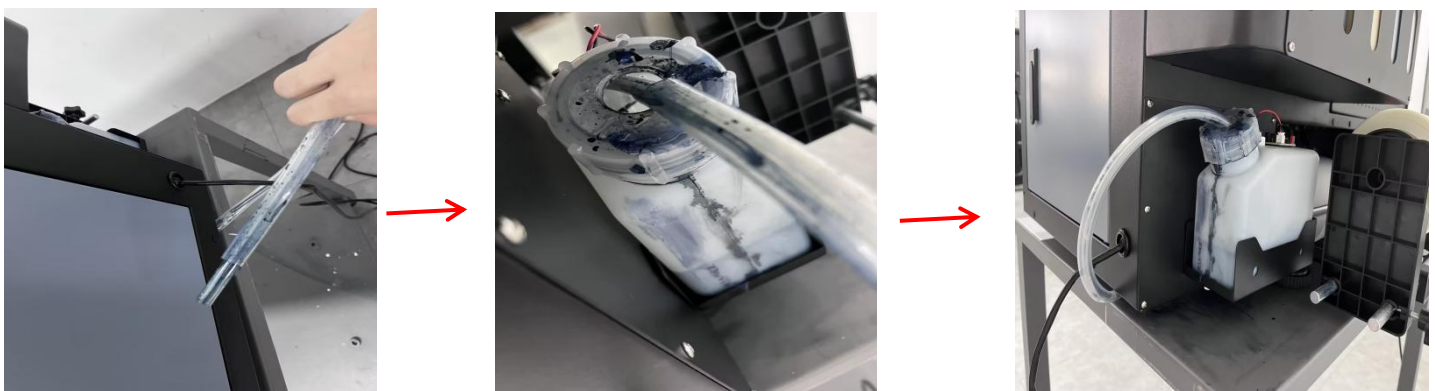
1. Shake the ink bottle before adding ink to prevent sediment at the bottom of the ink bottle.
2. Add CMYKW inks accordingly. Recommend to fill up to 500 ml (50%)



Step 7: Connect the waste ink tube with the waste ink bottle

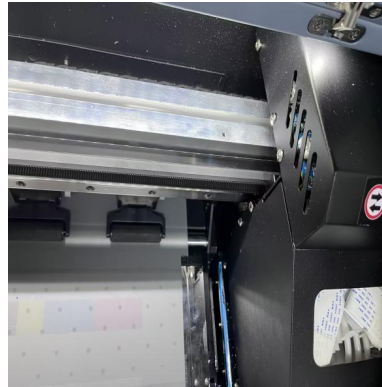
As shown below.

TICK BOX WHEN DONE WITH STEP



Step 8: Head Lock Removal

Open the top cover, remove the head lock. Please keep this head lock for the future use



Step 9: Turn the power on and connect the TCP IP Ethernet Port directly to the PC

TICK BOX WHEN DONE WITH STEP



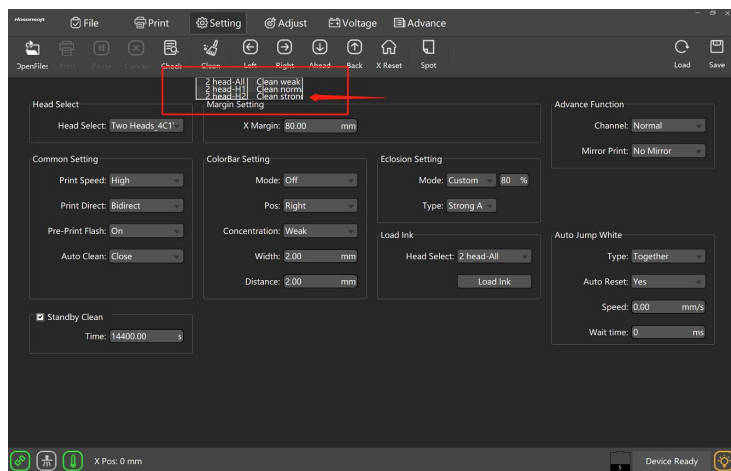
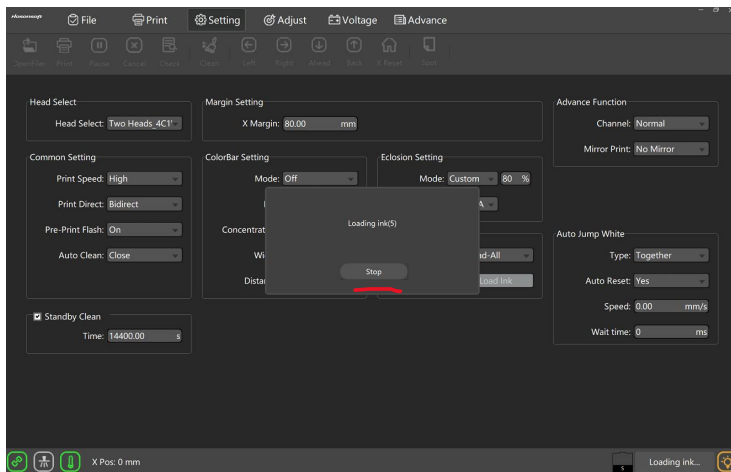
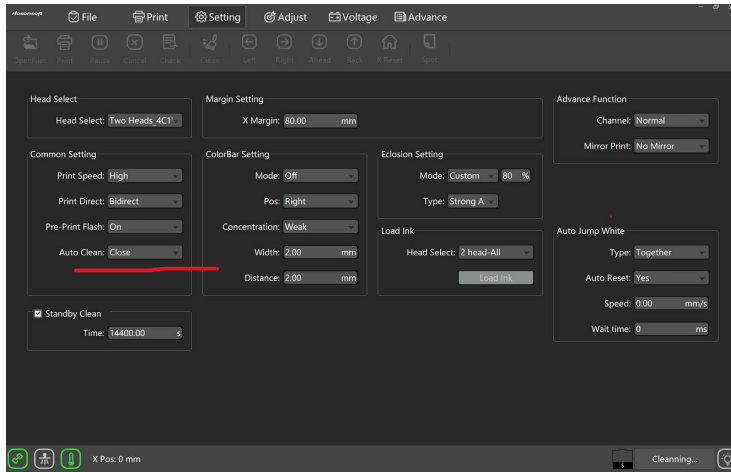
Step 9: Execute "Fill Ink/ Load Ink" and Perform "Cleaning"

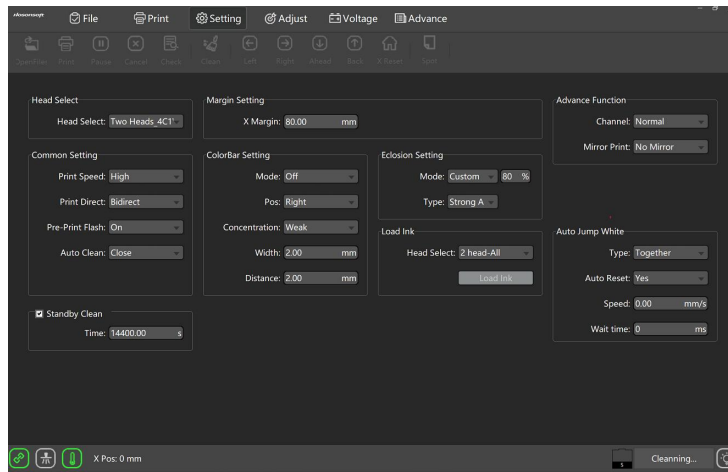
TICK BOX WHEN DONE WITH STEP

Hosonsoft Interface:

Setting> Load Ink> Head Select (2 head-All)

1. Execute the Load Ink for at least 1~ 2 minutes to ensure the inks get fully transferred to the printhead
2. Hit Stop and Execute "Clean Strong" twice

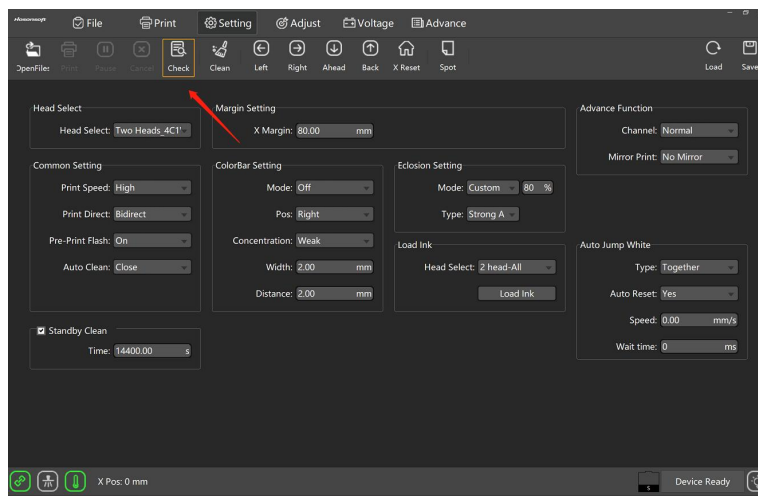




Step 10 : Perform nozzle check

Press "Check"

TICK BOX WHEN DONE WITH STEP



When the nozzle patterns are good, we could start to print. Good nozzle patterns example as below:

